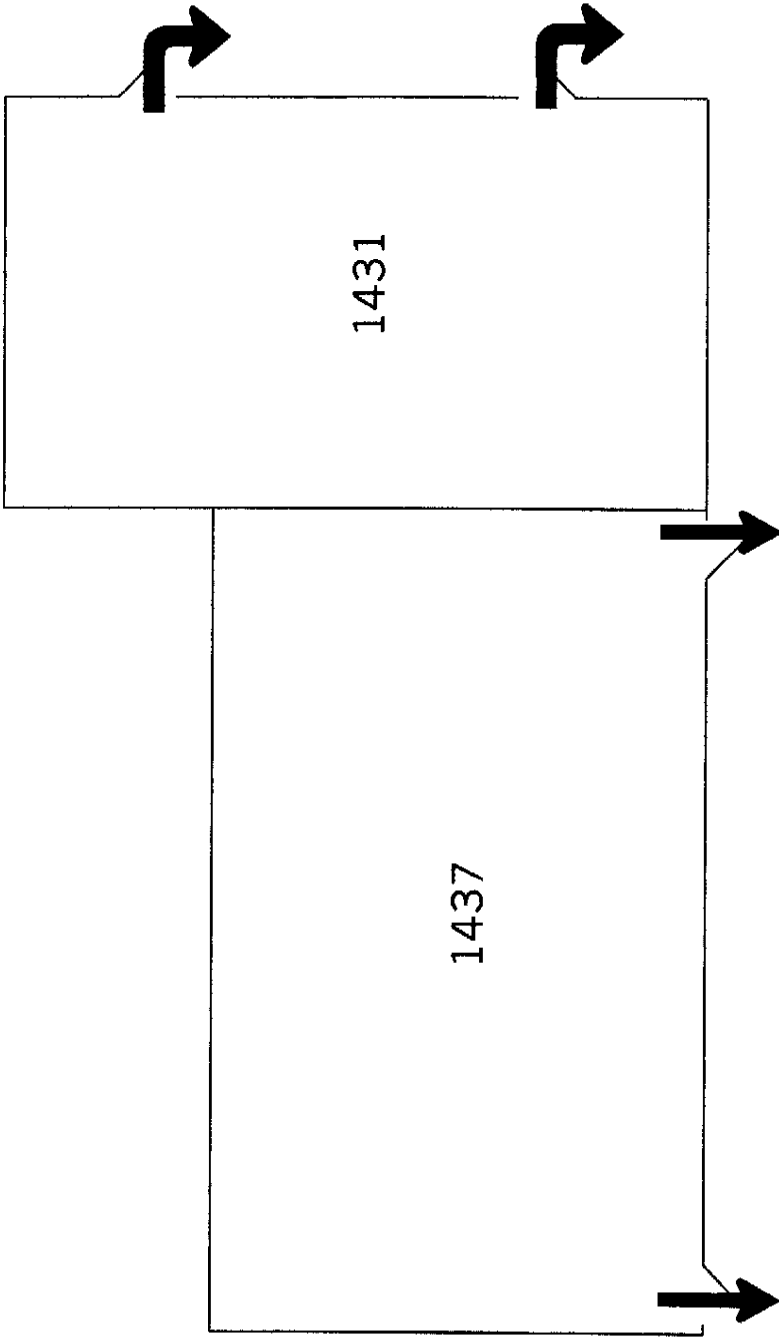
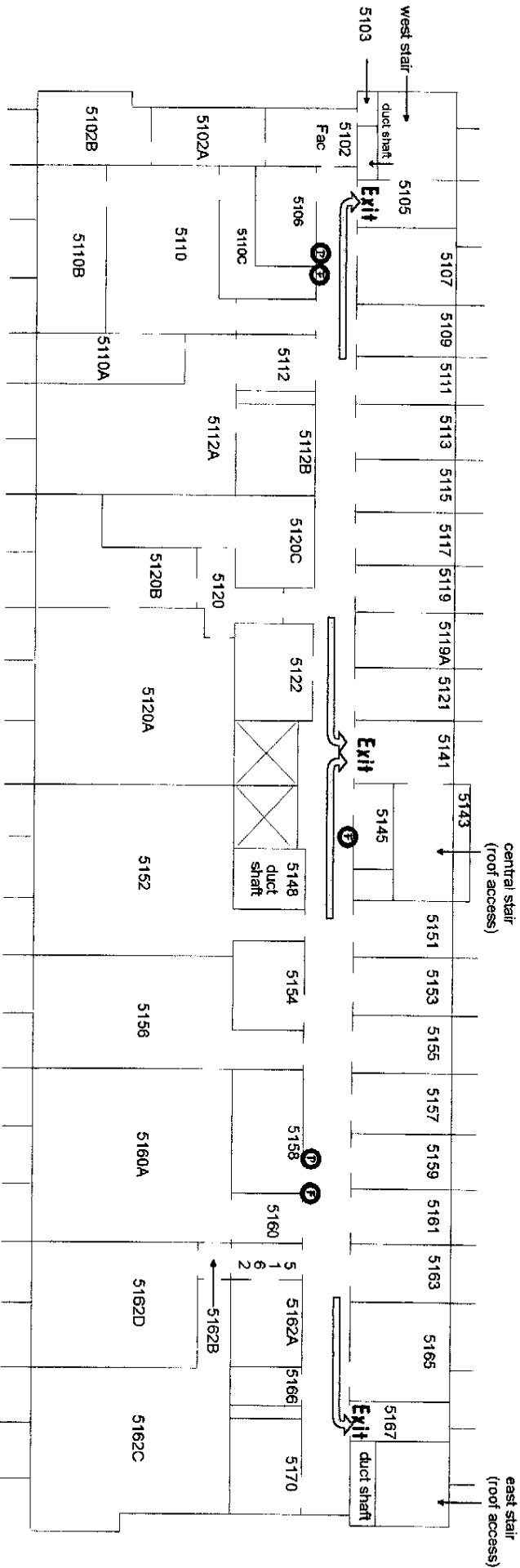


|  |          |  |
|--|----------|--|
| <b>Evacuation Routes and<br/>Emergency Assembly Points</b> |          |  |
| UCSB College of Engineering                                |          |  |
| Rev. Date:   | Rev. By: |  |
| 11/20/06   | P. Gritt |  |



|  |         |
|--|---------|
| <b>Emergency Evacuation Routes</b>     |         |
| Bldg. 560, Phelps Hall, Rms 1431, 1437 |         |
| NOT TO SCALE                           |         |
| REV. DATE                              | REV. BY |
| 990506                                 | dragon  |





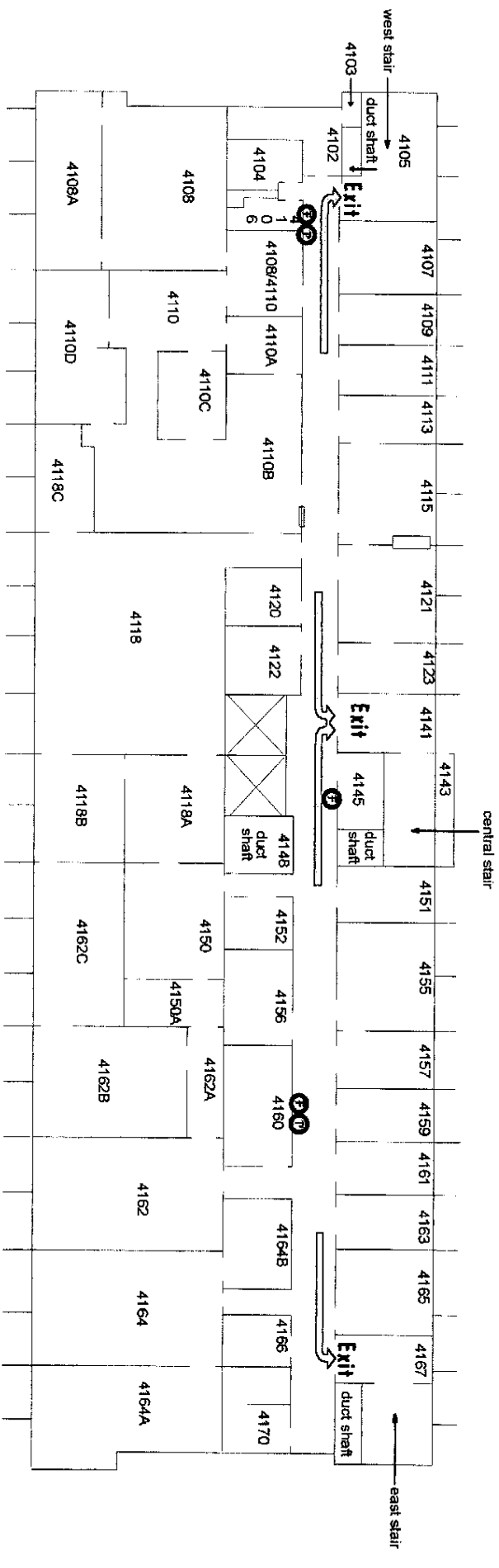
Fire Alarm Pull Station



Fire Extinguisher or Hose Location

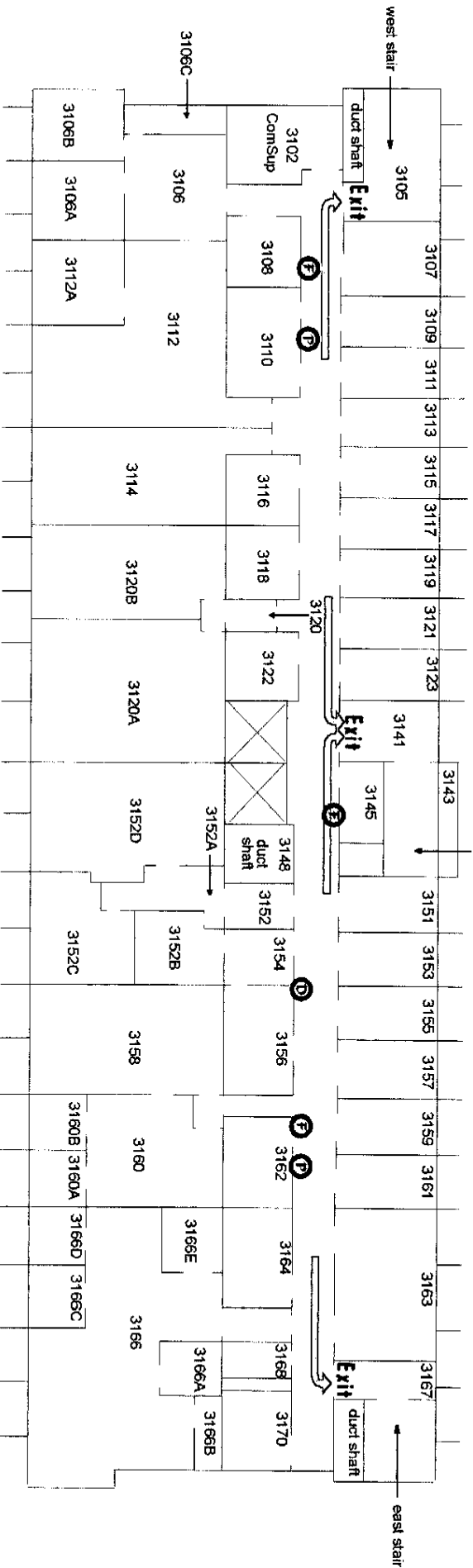
| Emergoops FLOOR PLAN            |         |
|---------------------------------|---------|
| Engineering Bldg. 1 (Bldg. 556) |         |
| Fifth Floor                     |         |
| REV. DATE                       | REV. BY |
| 9906511                         | dragon  |

-  Fire Alarm Pull Station
-  Fire Extinguisher or Hose Location





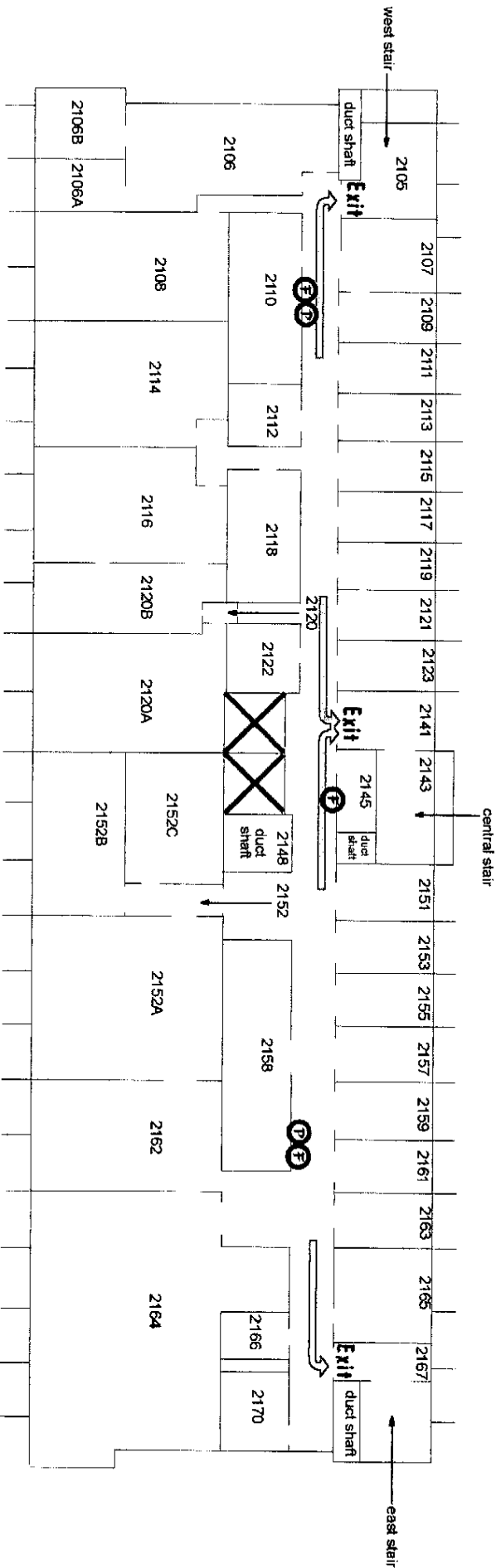
|                               |        |
|-------------------------------|--------|
| <b>EmergOps FLOOR PLAN</b>    |        |
| Engineering Bldg 1 (Bldg 556) |        |
| Fourth Floor                  |        |
| REV DATE                      | REV BY |
| 990611                        | dragon |

- P** = Fire Alarm Pull Station
- F** = Fire Extinguisher or Hose Location
- D** = Fire Alarm Display Panel



| EmergOps FLOOR PLAN             |        |
|---------------------------------|--------|
| Engineering Bldg. 1 (Bldg. 556) |        |
| Third Floor                     |        |
| REV DATE                        | REV BY |
| 990511                          | dragon |

-  Fire Alarm Pull Station
-  Fire Extinguisher or Hose Location



|                                 |         |
|---------------------------------|---------|
| <b>EmergoPs FLOOR PLAN</b>      |         |
| Engineering Bldg. 1 (Bldg. 556) |         |
| Second Floor                    |         |
| REV. DATE                       | REV. BY |
| 990511                          | dragon  |



Contact point for Emergency Responders



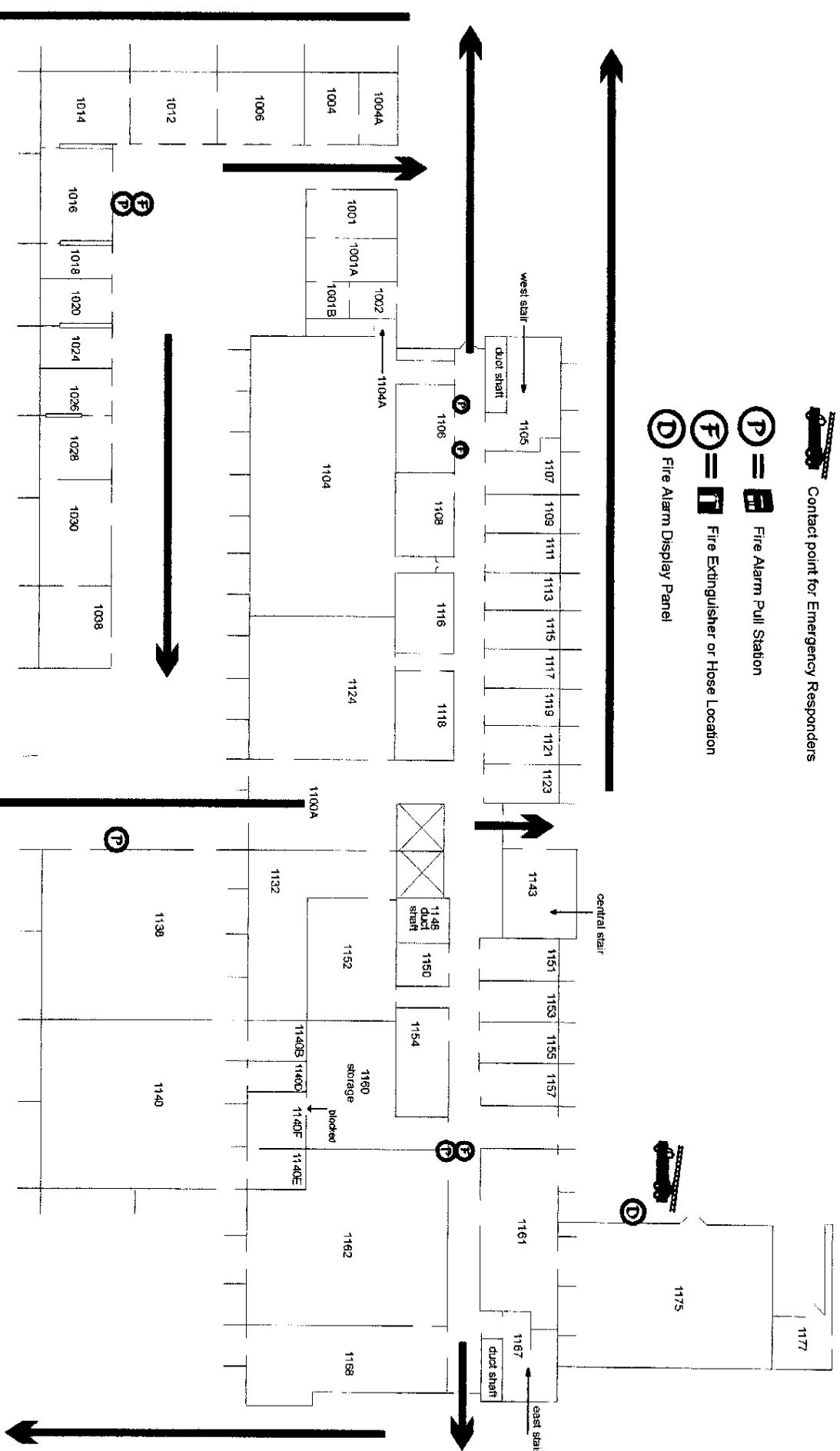
Fire Alarm Pull Station



Fire Extinguisher or Hose Location

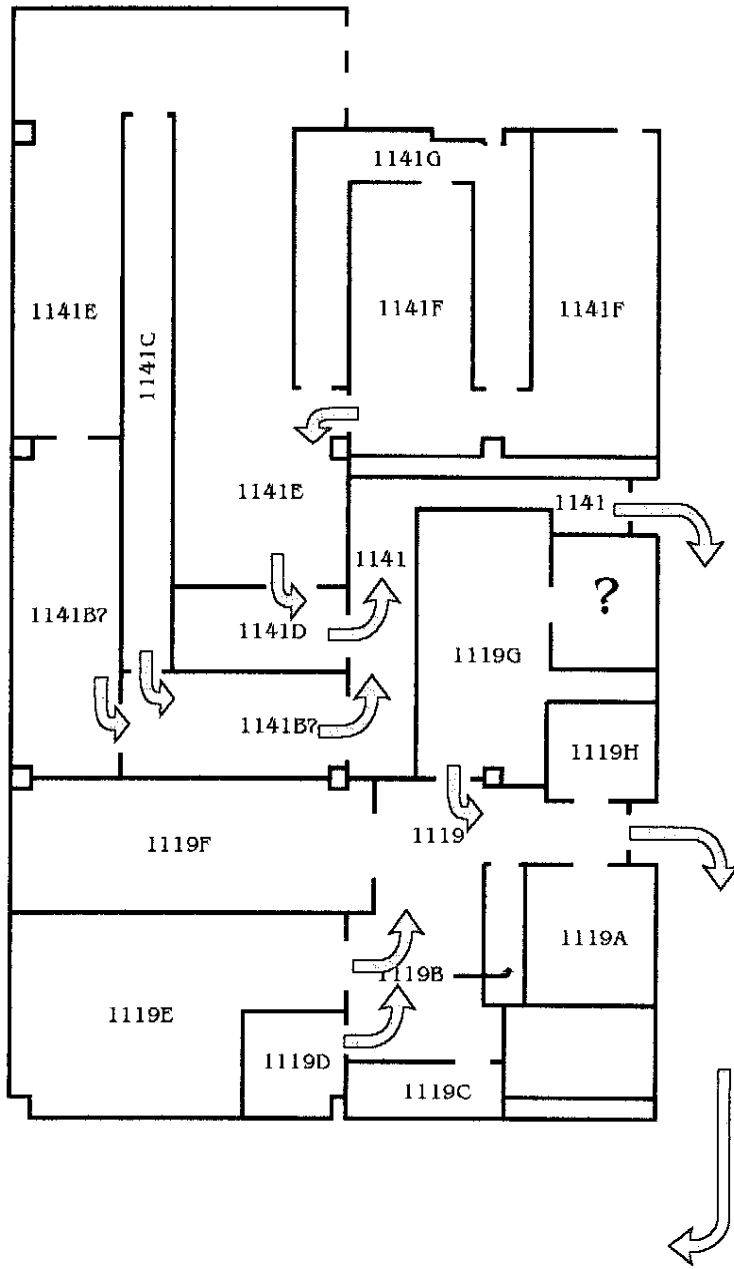


Fire Alarm Display Panel



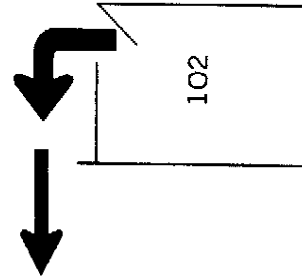
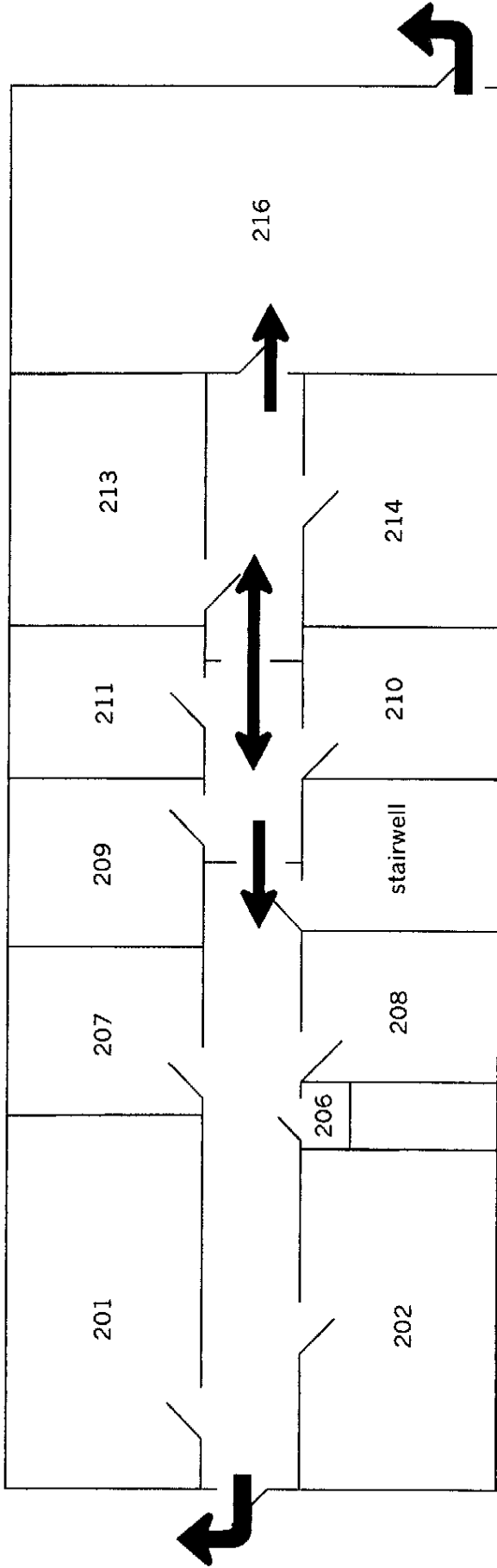
### EmergOps FLOOR PLAN

|                               |        |
|-------------------------------|--------|
| Engineering Bldg 1 (Bldg 556) |        |
| Ground (first) Floor          |        |
| REV DATE                      | REV BY |
| 9/30/07                       | diagm  |



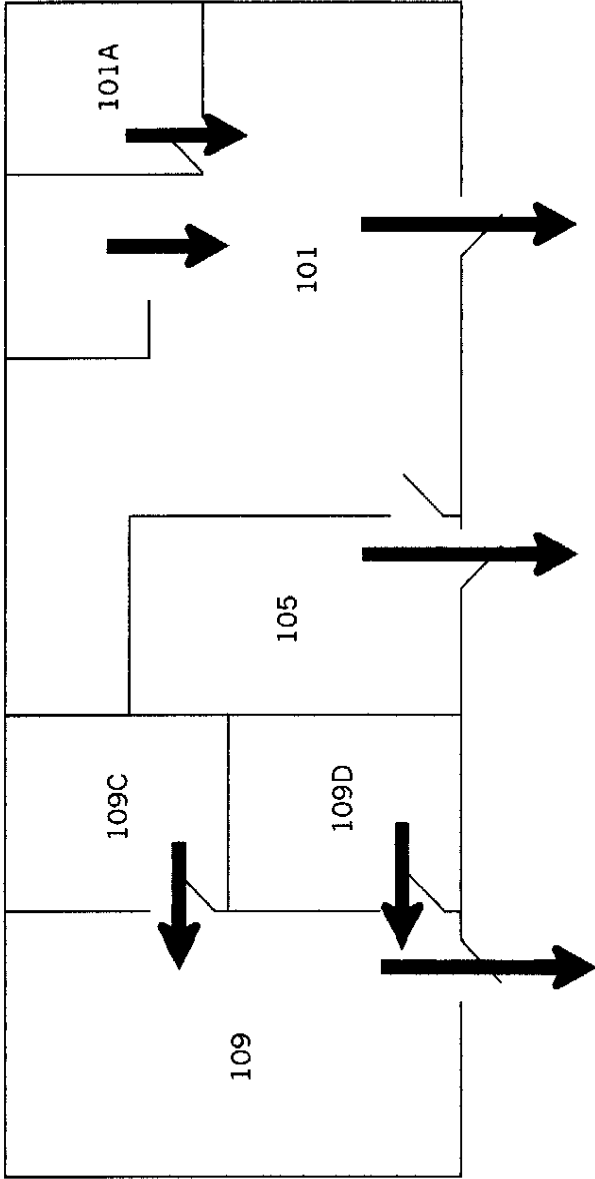
|                                 |         |
|---------------------------------|---------|
| <b>EmergOps FLOOR PLAN</b>      |         |
| Engineering Bldg. 2 (Bldg. 503) |         |
| Ground (first) Floor–West Wing  |         |
| REV. DATE                       | REV. BY |
| 990519                          | dragon  |



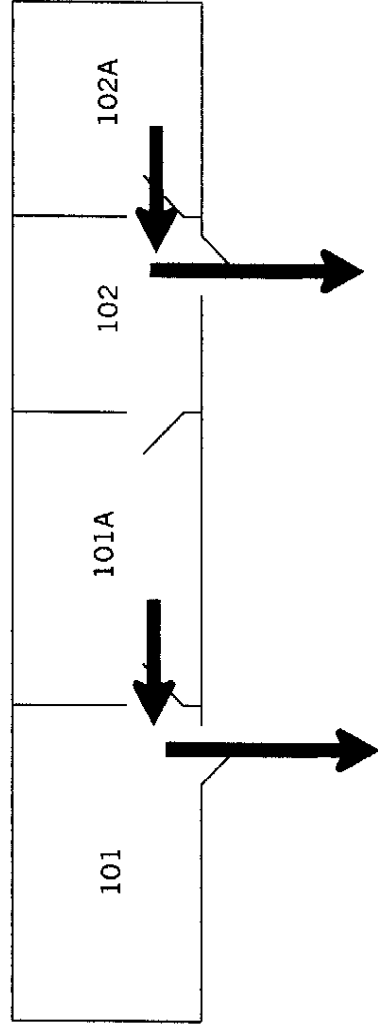


|                             |         |
|-----------------------------|---------|
| Emergency Evacuation Routes |         |
| Bldg. 406                   |         |
| NOT TO SCALE                |         |
| REV. DATE                   | REV. BY |
| 990506                      | dragon  |

Trailer 380



Trailer 384



|                            |         |
|----------------------------|---------|
| <b>EmergOps FLOOR PLAN</b> |         |
| Trailers 380 and 384       |         |
| Evacuation Routes          |         |
| REV. DATE                  | REV. BY |
| 9/05/06                    | dragon  |